

SedPell

RP52FT/CDB

52" Batch Seed Treater

Brought to you by:
Kannar Earth Science, Ltd.

Ready, set, go

Up and running in record time

CAD drawings of
equipment component,
suggested platform,
made available ahead of
time

Ships “modular”, ready
for plug and play





Sedpell earned the trust of the industry

Speed

900 lb / min
(300 lb's / batch;
20 seconds each)

Precision

Film coat, encrusting or pelletizing

Maintenance

Hours, not “days”

Most parts and pieces readily available
Room for equipment component
movement and operator access

Robust construction

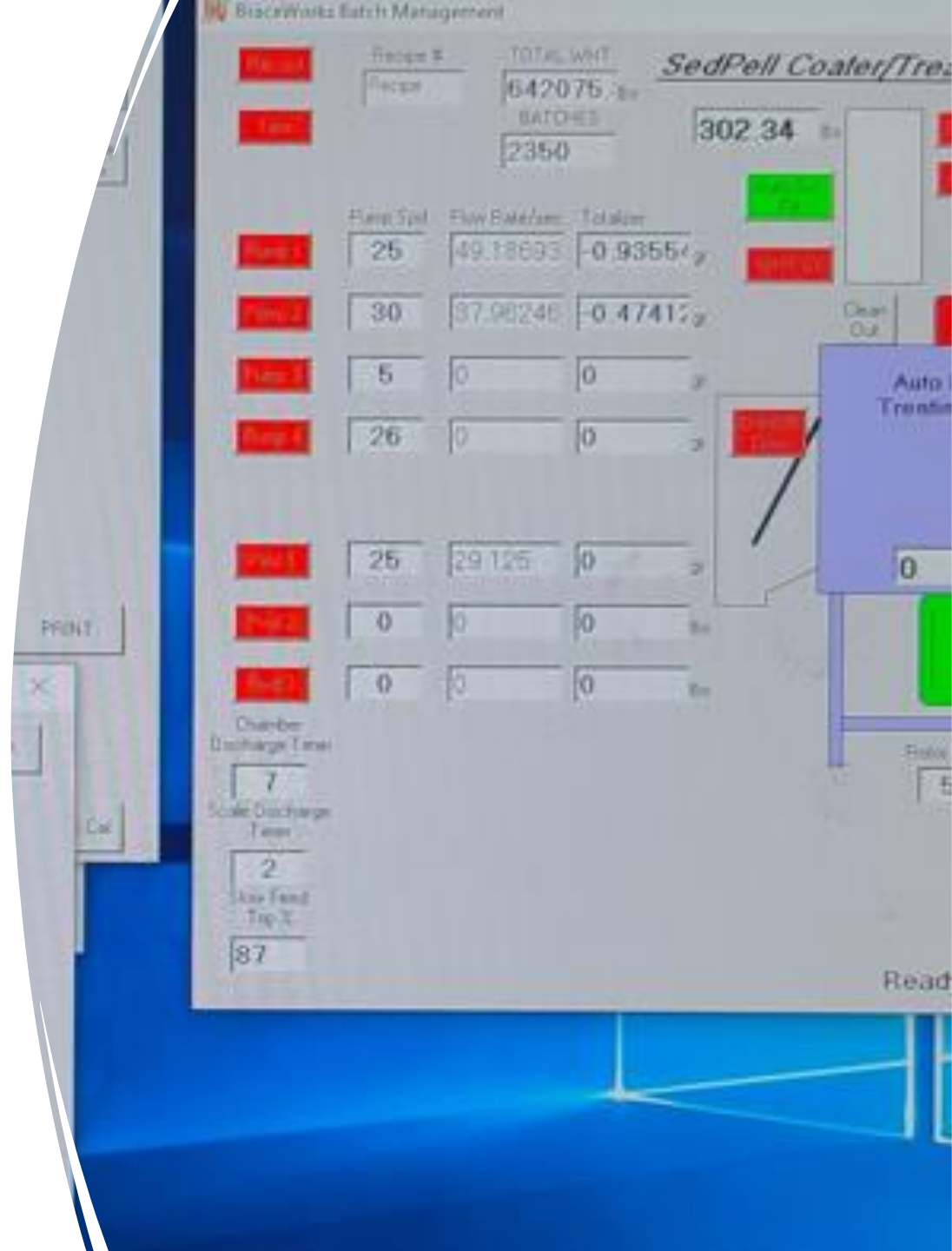
No belts
Built to last for decades of use

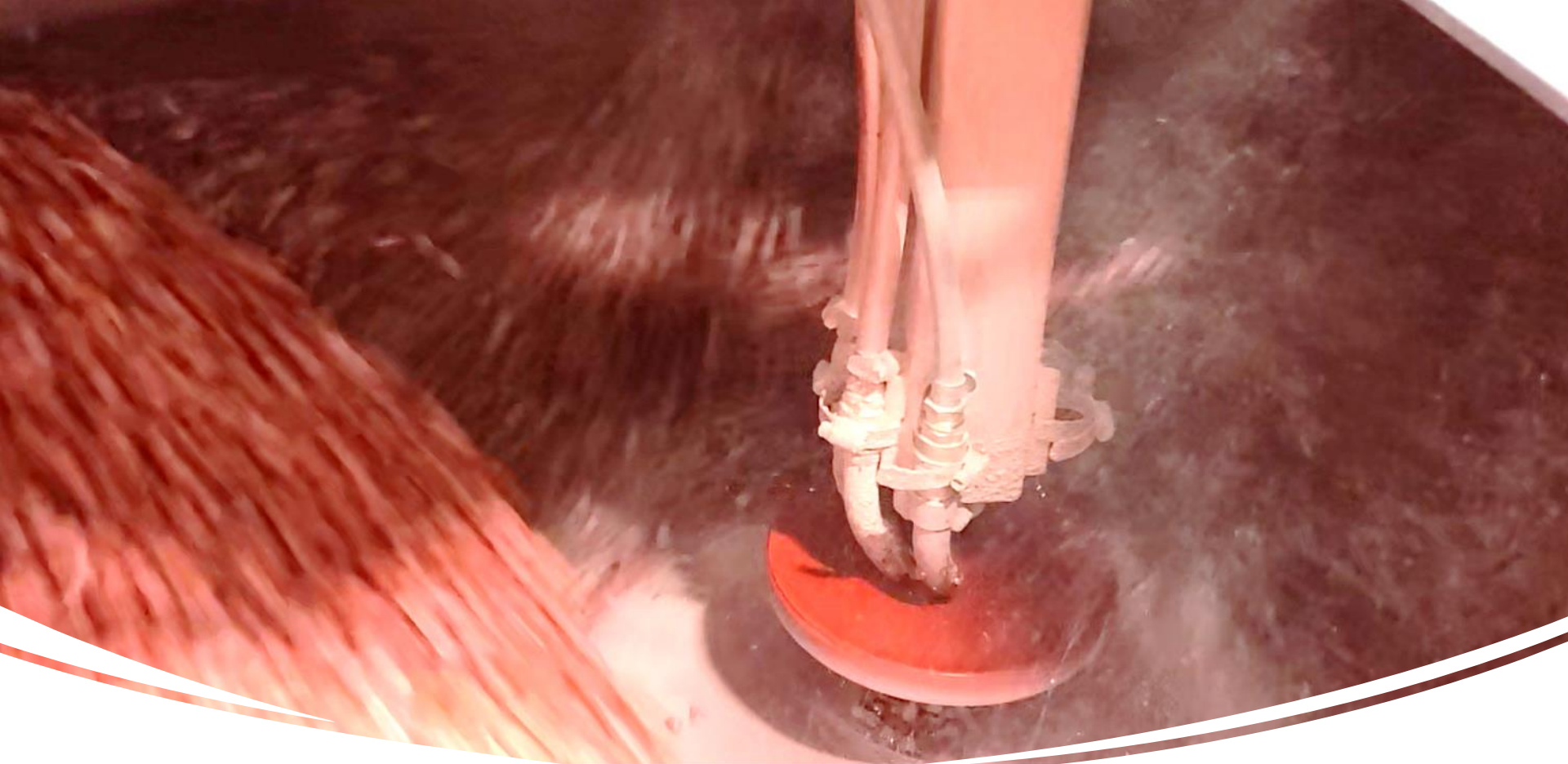
TREAT SEED IN NO TIME

Hybrid operating system for
both build up and film treating

Operates on Windows 10/11
with 19" touchscreen

Troubleshooting and
diagnostics available remotely





HIGH THROUGHPUT MADE EASY

Hi throughput seed batching scale with no risk or “bridging”

5-point mixing system minimizes batch time while being gentle on seed

7.5 cu. ft. capacity per batch

Treat 900 lbs per minute (seed being 40 lbs/cu. ft. and with as little as 20 sec/batch on film treatment)

Air seal between rotor and stator wall accelerate drying

Actuated mixing bar/discharge bar to rapidly discharge treated seed



**POWER
REQUIREMENTS
RPD52FT/CDB**

460 Volt 3phase 50 amps

2 cfm @ 90 psi clean dry air supply

MAINTENANCE QUICK AND EASY

Tungsten coated rotor (easily rebuilt)

Mixing tub wear components are replaceable

Can be used for mild build up coatings up to 25%

Auto-Calibrating pump delivery system

Up to 5 pumps and 4 powder feeders

Easy disassembly for maintenance



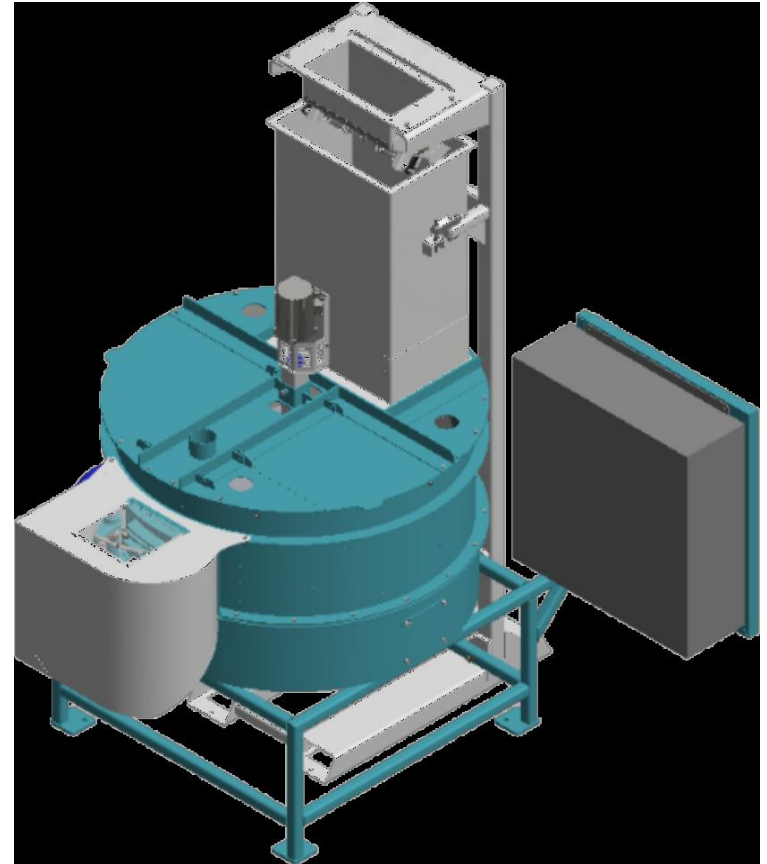
Minimum space requirements

Height **98”**
Floor to bottom of seed inlet

Width **107”**
For operator and equipment

Deep **85”**
Add depth for seed belts

Additional room for chemical
storage, and the weighing
station required.





kannar™
EARTH SCIENCE

Get started today

info@kannargroup.com

<https://kannargroup.com/equipment/>

Tel: +1 (678) 475-1155

